

# End-to-End

## The Parish Magazine of Rivenhall and Silver End



**Are we going to have  
a village Christmas  
like 2017 above? or  
could we have snow?  
The last time I can  
find the Church in  
Snow at Christmas  
was 2001**



**December**

**2021**

**50p**

## **The Following are our services For December 2021**

### **5<sup>th</sup> December**

9.30 am St Francis

11 am St Mary's

### **12<sup>th</sup> December**

Silver End

11.00 am St Mary's

### **19<sup>th</sup> December**

9.30 am St. Francis

11 am St Mary's

### **24<sup>th</sup> December**

3.00 pm St. Francis

4.30 pm St Mary's

### **25<sup>th</sup> December**

9.30 am St. Francis

11.20 am St Mary's

### **2<sup>nd</sup> Sunday of Advent**

Holy Communion

All Age Worship

### **3<sup>rd</sup> Sunday of Advent**

Joint at St Mary's

Nine Lessons and Carols

### **Sunday Next before Advent**

Morning Prayer

Matins

### **Sunday of Advent**

Lighting of the Christmas Tree

Lighting of the Christmas Tree

### **Christmas Day**

Holy Communion

Holy Communion

## **Church Contacts**

All Contact should be Via the Churchwardens

Churchwarden Ann Clarke

01376 514825

Churchwarden Peter Hope

01376 502605

Email [phope02@gmail.com](mailto:phope02@gmail.com)

Rivenhall Contact Carole McCarthy

01376 512781

Silver End Contact Ruth Aitken

01376 583846

Rivenhall Website

[www.stmarysrivenhall.co.uk](http://www.stmarysrivenhall.co.uk)

St Francis Silver End Website

[www.st-francis.org.uk/](http://www.st-francis.org.uk/)

## **A Christmas Message to Rivenhall and Silver End from our New Team Rector**

Happy New Year! 'Oh no. Not another one. There are so many. Let me see: New School Year, Hogmanay, Chinese - what have I missed?'

The Church one. Advent Sunday. 'Do I have to make New Year resolutions? I'm not very good at keeping them. Especially with Christmas coming up. All those presents to buy, parties, and the big meal to prepare for the Big Day. I'm just rushed off my feet just thinking about it...'

Advent might help. It matches the gathering cold, with its laid-bare trees and bright winter starlight. It invites us to pause, take time out, take stock. That's quite good with all the giddy rush to Christmas. Four weeks, starting on Advent Sunday - its always the one nearest the beginning of December. (November 28th this year.)

Advent holds up a mirror. It imagines the end. A funny way to start the year, with a sense of the end. But it helps. It matches the end of year. Winter is coming. And we all pause, hunker down, prepare to feast on the shortest, darkest days of the year. We pray and sing the stories of our faith in the face of the gathering dark. There are some great church services at this time of year. There's an Advent Sequence at St Nicolas at 6pm on the evening of Advent Sunday - choir, readings, candles. Beautiful. In the coming weeks we'll have lots of carol services in our churches. And crib services. Carols in the pubs too. It'll be joyous, full of wonder. And we'll join our neighbours in preparing our hearths and homes for Christmas. All good. But Advent is more than this.

Advent means coming. Jesus is coming and we do not know the hour or the day. Coming as judge to make sense of us. Coming ready or not. In Advent we are invited to take stock of our lives. To pause... Penitential prayers and purple vestments - and it used to be a time of fasting too, like Lent ... In Advent we turn to God, seeking forgiveness and the

time to amend our lives.

This Advent, take stock. Look for signs of hope in the darkness. Mark the days that lead up to Christmas. See your part in the longer story of faith. And nurture the things in your life that speak to you of God.

And we will prepare well to celebrate the birth of Jesus too.

Rev Dr Jonathan Pritchard Team Rector Witham and the Villages

### **The Lord Mayors Christmas Message**

I love Christmas. I love its warmth in the cold dark gathering nights, its generosity, and good neighbourliness. I love its carols and songs, all those School Nativities retelling the Christmas story. All the shiny, gaudy decorations and glittering lights we put up in our homes and shops. I love going to Midnight Mass and finding the church full of candlelight, catching my breath with its peace and holiness. I love my family and how we mark Christmas together. I wonder what Christmas means for you?

Christmas is a gift shared with us all, whatever our faith or beliefs. Christmas is a time when we half-hear the angels singing. Half-hear echoes of God's love. We party like there's no tomorrow. We overeat. We run up debts so the kids have a great Christmas. Families and friends gather. (And often fall out.) The Royle family leave the washing up to David. Steve McQueen doesn't quite make it to Switzerland in the Great Escape (again). Slade keep bellowing, 'Its Christmas!' And the Pogues still sing their wonderful Fairy Tale of New York. At Christmas we all share half-remembered dreams of a better tomorrow.

There's a thread of hope in Christmas. That this wonderful, messed up world of ours is something worth loving. And that Love is the most important thing for making sense of it.

So we tell a story - sing the story in carols - of Jesus born in Bethlehem. Tiny new-born baby in its mothers arms. Born into a world full of threat and danger. And in it we hear a deeper story, that speaks of heaven and earth coming

together in Jesus - Immanuel: God-with-us in the middle of our wonderful and difficult world. Mending broken lives and broken world. Jesus' life brings hope, joy and peace. And Christmas celebrates this story beginning.

Happy Christmas to you all. Have a fabulous Christmas. And may the peace of Jesus fill your hearts and home with love this Christmastide,

\*\*\*\*\*

### **Some Thoughts for December 2021 from Ann Clarke**

Kenneth Plummer, 1920 – 2010 Served in the RAF. Loyal wife to Ina, and Dad to Catherine and , yes – ME.

He was a DIY – Jack of all trades kind of a chap. He would help you with any thing, and had several sheds full of 'odds and ends' to help him! He would decorate, build cupboards, decoke his car, grow vegetables etc, etc. He even made wine once - never drank it – when we poured it down the drain after his funeral in Maidenhead, the drains had a lovely clear out! David, our son, aged about 3 once found a shrivelled wood louse and gathered it up , gave it to grandad and said – Grandad mend it!

As the years passed and his health declined, he would often say to anyone who would listen – Don't get old!. I find myself saying it now as I get creakier!. However if you turn all the years into lovely memories, it's not so bad! It is amazing how we evolve, quicker and quicker in so many things. Some for good and some not so good. My Grandfather was born in the 1880's when there were no cars on the road, and before he died we sent men to the moon!

Apparently in 1971 some houses still had outside loos! By 1972 only 37% of houses had central heating, and only about 50% of people had access to a car or a van. Progress happens faster and faster, or it certainly seems to!

Almost every part of England is part of a Parish with a parish church, and according to Wikipedia very rarely a parish has two churches! How lucky are we?

England is separated into two provinces, sometimes called

Sees: Canterbury with 32 Diocese and York, with 12. We are in the diocese of Chelmsford which was not founded until 1914. It is the most populous Diocese after London, not surprising really as we are part of that crowded South East England. In the diocese of Chelmsford there are 588 churches. But only 463 Parishes. The figures I am giving you are changing often, but I believe that very soon, there will only be 215 priest posts in the Diocese. Even though there are fewer posts, it is still hard to fill the positions, as there are fewer people training to the priesthood, and this is true of all denominations.

When Mike Hope and I were Churchwardens many years ago, it was suggested that Rivenhall and Silver End join with Witham parish. My how we fought it! We got into serious trouble with the Bishop I can tell you! We felt that if we had to merge with anybody could it be a similar village? The ideas were then shelved. But slowly it has become evident that parishes sharing a priest is the future for now. I'm sure you all know people who live in a village where the priest looks after several churches. Service times have to change and often services are every other week, or even once as month.

When you only live one life, you only experience a very small part of history. We all complain about how things are changing and these are most upsetting when they are local and affect you. How many of us will be upset to see Barclays Bank in Witham go!

So the point of my short article is to let you know that – Yes there is now a priest vacancy in our Witham and Parishes group, and yes things will change as they are changing in the Church of England in every Parish. But I want to reassure you that the current team in Witham may be small, but with the new Rector in charge Rev Jonathan Pritchard, he has promised to try to provide us with regular services in the coming months. Yes, we will still be having Lay Led services, just as they do in most parishes, but yes, he and other members of the clergy will be coming to us, and also to the

other churches in our group. We must share more. We do not know what the future will hold, but Peter Hope and I are quite confident that another priest will be appointed to our team, in the not too distant future. Stick with us and we, with Rev Val and the rest of the team's help, will continue to lead and inspire you all.

(Rev J Pritchard will be taking Holy Communion at St Francis Church at 9.30 on 21<sup>st</sup> November and at St Mary and All Saints at 11.15 on 28<sup>th</sup> November.)

\*\*\*\*\*

## **Readings and Collects for November 2021**

### **5<sup>th</sup> December 2<sup>nd</sup> Sunday of Advent**

#### **Readings**

Malachi 3: 1-4

Philippians 1: 3-11

Luke 3: 1-6

#### **Collect**

Almighty God,  
purify our hearts and minds,  
that when your Son Jesus Christ comes again as  
judge and saviour  
we may be ready to receive him,  
who is our Lord and our God.

### **12<sup>th</sup> December 3<sup>rd</sup> Sunday of Advent**

#### **Readings**

Zephaniah 3: 14-End

Philippians 4: 4-7

Luke 3: 7-18

#### **Collect.**

God for whom we watch and wait,  
you sent John the Baptist to prepare the way of your Son:  
give us courage to speak the truth,  
to hunger for justice,  
and to suffer for the cause of right,  
with Jesus Christ our Lord.

### **19<sup>th</sup> December 4<sup>th</sup> Sunday of Advent**

#### **Readings**

Micah 5: 2-5a

Hebrews 10:5-10

Luke 1:39-45

**Collect**

Eternal God,  
as Mary waited for the birth of your Son,  
so we wait for his coming in glory;  
bring us through the birth pangs of this present age  
to see, with her, our great salvation  
in Jesus Christ our Lord.

**25<sup>th</sup> December Christmas Day**

**Readings**

Isaiah 9: 2-7

Titus 2: 11-14

Luke 2: 1-14

**Collect**

Lord Jesus Christ,  
your birth at Bethlehem  
draws us to kneel in wonder at heaven touching earth:  
accept our heartfelt praise  
as we worship you,  
our Saviour and our eternal God.

**26<sup>th</sup> December 1st Sunday of Christmas**

**Readings**

Exodus 33:7-11a

1 John 1

John 21: 19b-end

**Collect**

God in Trinity,  
eternal unity of perfect love:  
gather the nations to be one family,  
and draw us into your holy life  
through the birth of Emmanuel,  
our Lord Jesus Christ.

\*\*\*\*\*

**The 50/50 Club October 2021 winners**

1<sup>st</sup> Mrs J Firmin    2<sup>nd</sup>: Mr & Mrs White    3<sup>rd</sup>: Mr B Bell

\*\*\*\*\*



## **Recycle your Christmas Cards**

Janice Hawkes, that used to live and worship in Silver End, has asked us to give us the following information and hope that you might like to help her.

Janice does a lot of good work at the food bank held in the Methodist Church in Witham.

She has been recycling Christmas Cards into new ones and the folk who come to the food bank are very grateful to get the opportunity to send cards at Christmas, even though they cannot afford to buy new ones.

If you would like to donate your used Christmas Cards please take them to either church after Christmas and they will be given to Janice who will work her magic!

Thank You

\*\*\*\*\*

## **RIVENHALL PARISH COUNCIL**

### **NOTES OF MEETING HELD ON 2<sup>ND</sup> NOVEMBER 2021**

#### **These notes are an abridged version of the minutes**

**Present:** Cllrs. Wright (Chairman), A'Lee, Cairns, Elliott, Prime and Turner.

**Also present:** Parish Clerk and 1 member of the public.

#### **To receive any apologies for absence**

An apology was received from Cllr. Abbott who was attending a BDC Planning Committee meeting. Cllr. Wright (Vice-chairman) chaired the RPC meeting. Also an apology was received from ECC Cllr. Playle.

#### **Public Forum**

The Clerk read a summary of Cllr. Playle's report, including the proposed PRoW along Church Road; flooding, the deadline for BDLHP requests and the meeting with the ECC Cabinet Member for Highways on Thursday 4<sup>th</sup> November, which Cllr. Abbott will attend.

#### **Matters for Discussion**

Letter for residents of Bluebells estate

It was **agreed** that a letter be compiled, based on a draft supplied by

Cllr. Prime, for approval by members at the December meeting prior to its issue to the residents of Bluebells during early 2022.

#### RPFA membership

The Chairman, Vice-chairman and Cllr. Cairns attended the recent RPFA meeting and offered RPC support for the RPFA to continue, as the Village Hall is an important facility within the village. Some RPFA issues are being followed up via BDC.

#### Fly tipping at the recycling site

BDC is requesting that a pole be installed at this site, similar to that installed at Tarecroft Wood Car Park, for the support of 2 mobile CCTV cameras to monitor the site. It was **agreed, in principle**, to proceed with this request, if a BDC Councillor Grant can be obtained to cover the cost. Speed monitoring along Rickstones Road

A resident from Bluebells had raised the issue of speeding vehicles along Rickstones Road. It was **agreed** that Cllr. Abbott complete an LHP request for speed loop surveys to be undertaken in the area from Conrad Road through to the junction with Church Road.

#### Tree & Bulb planting

Following a site meeting, RPFA agreed to planting at 2 locations on the Albert Moss Playing Field; up to 30 small native trees in the south eastern corner and 2 specimen ornamental trees along the northern boundary. BDC has been informed and Cllr. Abbott is drawing up a plan to share with them, RPFA and RPC. Cllr. Turner registered his objection to the planting of any trees at the Albert Moss Playing Field.

#### Highway Maintenance

Cllr. Abbott has corresponded with Highways England/National Highways and ECC regarding the latest flooding under the A12. HE's pump is working and the problem once again is due to silting of ECC gulleys, the clearing of which on a regular basis has been requested.

Cllr. Abbott has reinstated the drain cover in Oak Road. Cllr. Abbott will attend the ECC Highways Surgery in Witham and will raise the issues of flooding within the parish.

#### **Planning Applications**

**21/03025/FUL:** 5 bedroom dwelling at Colemans Fishery, Little Braxted Lane, Rivenhall End. It was **agreed by majority vote** to raise no comments regarding this application.

**21/03191/FUL:** Internal alterations & new building at Southview Primary School. Members raised no comments regarding this

application.

## **Planning results**

**20/02060/OUT:** 230 dwellings off Rectory Lane

At the BDC Planning Committee Meeting Cllr. Abbott had proposed refusal on 6 grounds but this was defeated by 5 votes to 3 and the matter was deferred to a future date.

It was **agreed** that the Clerk write to BDC regarding the following issues:

During the official presentation at the BDC Planning Committee meeting, Rivenhall Parish was only mentioned once whereas Witham was repeatedly referred to even though the site is within Rivenhall.

No photographs or other documents showing the existing dwellings in the Rickstones Road area of Rivenhall and how the proposed bus gate would impact the area were displayed, only the photographs of the business units.

The report to the committee and the presentation failed to quote the policy in the Village Design Statement (VDS) of avoiding coalescence with Witham and the policy on Rectory Lane was misrepresented as the VDS clearly states that Rectory Lane should be protected as it is.

## **Planning Enforcement**

Cllr. Abbott had submitted another enforcement report to BDC re the Bellway breaches. BDC had replied to say that they would not enforce as the matters should be cleared up due to the planning consent running out early in 2022, which would mean that the cabins would be removed from the temporary car park and the scaffolding bridge would be replaced with the consented low profile bridge (Note: though this appears to assume that Bellway Phase 4 is going ahead).

## **Ongoing Planning Issues**

### A12 widening

At the recent update meeting Highways England/National Highways confirmed there would be further public consultation, but no major changes to plans consulted on in the summer (Note: this consultation is now open until 19<sup>th</sup> December – details on National Highways website).

## Rivenhall Airfield major Waste Site

Cllr. Abbott had written to ECC Planning asking why enforcement action had not been taken regarding the developers of the waste site starting construction on the basis they had made it clear to the Liaison Meetings that they would not build what the planning consent stipulates. ECC replied that they had not 'officially' been notified. Cllr. Abbott had asked for the legal advice ECC obtained in this matter, which was refused.

**ESS/34/15/BTE/64/01:** Pursuant to condition 64 (Historical Building Recording of Woodhouse Farm complex) of ESS/34/15/BTE. It was **agreed** there was no need to comment on this application.

The waste site developers are to hold a Public consultation on 15<sup>th</sup> November at the Rivenhall Hotel regarding the redevelopment of the Woodhouse Farm complex.

## Braintree Local Highways Panel

A detailed parish council reply had been made to the ECC comments which appeared to reject the proposed new public footpath along Church Road. Cllr. Abbott, as District Councillor, also followed this with a more detailed history of the proposal (initiated about 20 years ago), suggesting that the new sections of PRoW would fully comply with policies to tackle climate change, promote modal shift and to support healthier lifestyles.

## **Finance**

The annual payment of £200 to assist with the cost of purchasing the Rivenhall Christmas tree was **agreed**.

## **Information exchange and items for the December agenda**

The Grant application for the supply and installation of the new litter bin at the recycling site has been approved by BDC.

Cllr. Wright reported that the ECC approval of the TRO for Rectory Lane is dependent on the approval of the Bellway Phase 4 application.

## **Public feedback**

Residents of Bluebells will be included in the distribution of the RPC Annual Report in spring 2022.

## **Dates of future meetings**

7<sup>th</sup> December at Henry Dixon Hall and 4<sup>th</sup> January 2022 at Rivenhall Village Hall, both meetings starting at 7.30pm.

# Coconut Squares

- 2 oz softened butter
- 2 oz castor sugar
- 1 egg
- 1 egg yolk
- 1 tbsp milk
- 3 oz self raising flour
- Topping
- 1 egg white
- 2 oz demerara sugar
- 2 oz dessicated sugar
- Grease an 8" square cake tin

Beat butter and sugar until light and fluffy. Mix together the egg, egg yolk and milk, then beat half into the butter mixture. Beat in the remaining half with the flour. Turn into tin and smooth top.

## Topping

Beat the egg white until stiff, then fold in the sugar and coconut. Spread over cake mixture. Bake in a moderate oven 180, gas 4 for 25 to 30 minutes.

Leave to cool then cut into 12 pieces.

\*\*\*\*\*

## **Rivenhall Christmas 2021**

The Rivenhall Millennium Committee plan to erect the Christmas tree on Rivenhall village green on Saturday 11<sup>th</sup> December (this is funded by ourselves with a contribution from Rivenhall Parish Council on behalf of the residents). The tree will be illuminated and decorated again this year and we really do hope you will again delight in its presence.

Santa's Sleigh should be gliding round Rivenhall and Rivenhall End on Sunday 18<sup>th</sup> December: this is always a nervous moment as rain can postpone this or (never happened yet), cancel it. Our Santa Sleigh plan is:-

Leave Rivenhall Hall Farm at 3:30 pm. Our route will be Oak Road - St Mary's Road - Tusser Close - Beech Road - Rickstones Road - The Bluebell estate (we anticipate being in Bluebell somewhere between 5:00 to 5:30 pm.) This will be our first glide to Bluebell and we much look forward to welcoming you all to your first Christmas in our village). We have sweets for all the children who come out to see Santa. Then we move down to Rivenhall End (probably about 6:30 to 7:00 pm):-

The route is Oak Road - Browns Row - Foxmead - Foxden - Henry Dixon Road.

On the way we will be delivering our annual Christmas gifts to each household with a member aged 70 or over. A reminder to our new friends in Bluebell - is there anyone in your household aged 70 or over? Please do let us know as we would hate to miss anyone.

Should rain intervene we will do our utmost to re-schedule Santa's Sleigh in the following few days (so keep your eyes out for any updated leaflet drop and also please do monitor the truly excellent Rivenhall Community Facebook page).

On Tuesday 21<sup>st</sup> December we will be holding our annual carols round the Christmas tree on Rivenhall village green. Due to local Covid restrictions we are unable to continue our Christmas celebration in the village hall, but instead our free mulled wine, fruit juices, pastries, a super raffle, and much more, will take place on the village green after the carols..

We are absolutely delighted to again have the Chelmsford Silver Band supporting us through the evening (doubtless wearing thermals!) Please do make a big effort to support this village event - we will be thrilled to see you all.

The Rivenhall Millennium Committee wishes everyone in Rivenhall a truly wonderful Christmas, and may we all look forward to a more positive 2022.



## CONNECTED CABS WITHAM

01376 317777



 Wheelchair Accessible

All fares fixed price (no meters)

Card payments accepted in cars



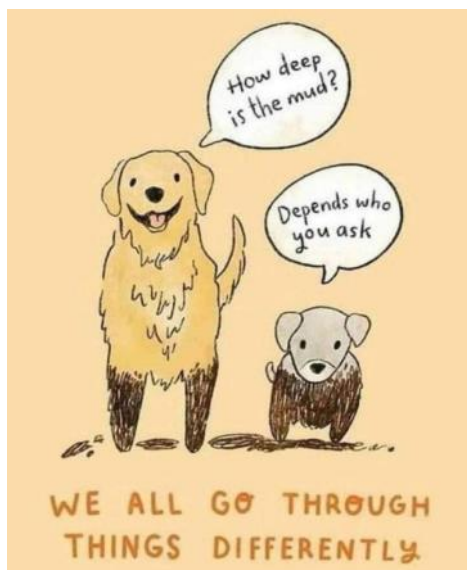
## Prices from Witham:-

### Hospitals

Broomfield	£22
Colchester General	£25
Springfield	£18
St Peters/ Braintree	
Community	£15
Maldon	£15

### Airports

Stansted	£40
Heathrow all Terminals	£96
Gatwick	£95
London City	£75
Southend	£50
Loton	£95




Aerial Photography

Barns

Chimneys

Roof Tops

**COST EFFECTIVE, SAFE ACCESS,  
ROOF TOP INSPECTIONS BY  
DRONE WITH NO NEED FOR  
SCAFFOLD, TEMPORARY WORK  
OR STRUCTURES REQUIRED.**



**NON DISRUPTIVE, FAST AND  
PROFESSIONAL SERVICE, SAME  
DAY REPORTS AND  
RECOMMENDATIONS FOR  
REPAIRS**

**FULLY CAA AND CIOB  
REGISTERED, QUALIFIED AND  
INSURED SERVICE. CARRIED OUT  
BY EXPERIENCED SURVEYORS.**

Call to discuss your requirements;  
Chris: 07817219133  
Jim: 07966403783  
email: [highsightse@gmail.com](mailto:highsightse@gmail.com)

Historic Buildings Monitoring

Building Inspections

Estate Records

# ANGLIA TREE SERVICES

Specialist tree surgery

Residential & Commercial Customers

CROWN REDUCTION • FELLING • TOPPING

HEDGE TRIMMING • ALL GARDEN WORK

STUMP GRINDING

For a quick, tidy and friendly service call:

Tel: 01621 892831



7 DAYS A WEEK • EMERGENCY SERVICE AVAILABLE • FULLY INSURED



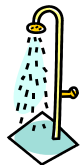
**Philip Little**

Property Maintenance Magician

Local service at local prices

Knowledgeable and friendly

**07973 129808 or 01376 515257**







**Christmas in Rivenhall**  
**12th December CAROLS**  
**at St Mary's Church Rivenhall**



**Our service of 9 Lessons and Carols will  
be held at St Mary's Church Rivenhall on  
Sunday 12th of December at 11 am come  
and get in the mood for Christmas!!**

**\*\*\*\*\***

**21st of December Carols on the Green**  
**We Will be singing Carols on the Village Green**  
**starting at 7.30 pm**  
**with the Chelmsford Silver Band in attendance**  
**This will be followed by Mulled Wine and Mince Pies**  
**in the Village Hall (with a maximum of 60 inside)**

**\*\*\*\*\***

**24th of December Lighting of the  
Christmas Tree (Crib Service)**  
**3 pm St Francis Silver End**  
**4.30 pm St Mary's Rivenhall**

**\*\*\*\*\***

**25th December Christmas Day**  
**9.30 am St Francis Christmas Day Service**  
**11.15 am St Mary's Communion Service**  
**led by Dr Rev J Pritchard**



This is Karen's new Trainee Guide Dog Matty . He looks like a well behaved dog!



## **Pauls last Service and licensing in Tadcaster**

As most of you are aware, Paulie has now been licenced as the priest-in-charge at St Marys Tadcaster. He is team rector for the Benifice of Tadcaster which includes St Mary's Tadcaster, St Mary's Church Fenton, St John the Baptist Kirkby Wharfe and Ulleskelf and St Andrew's, Newton Kyme.



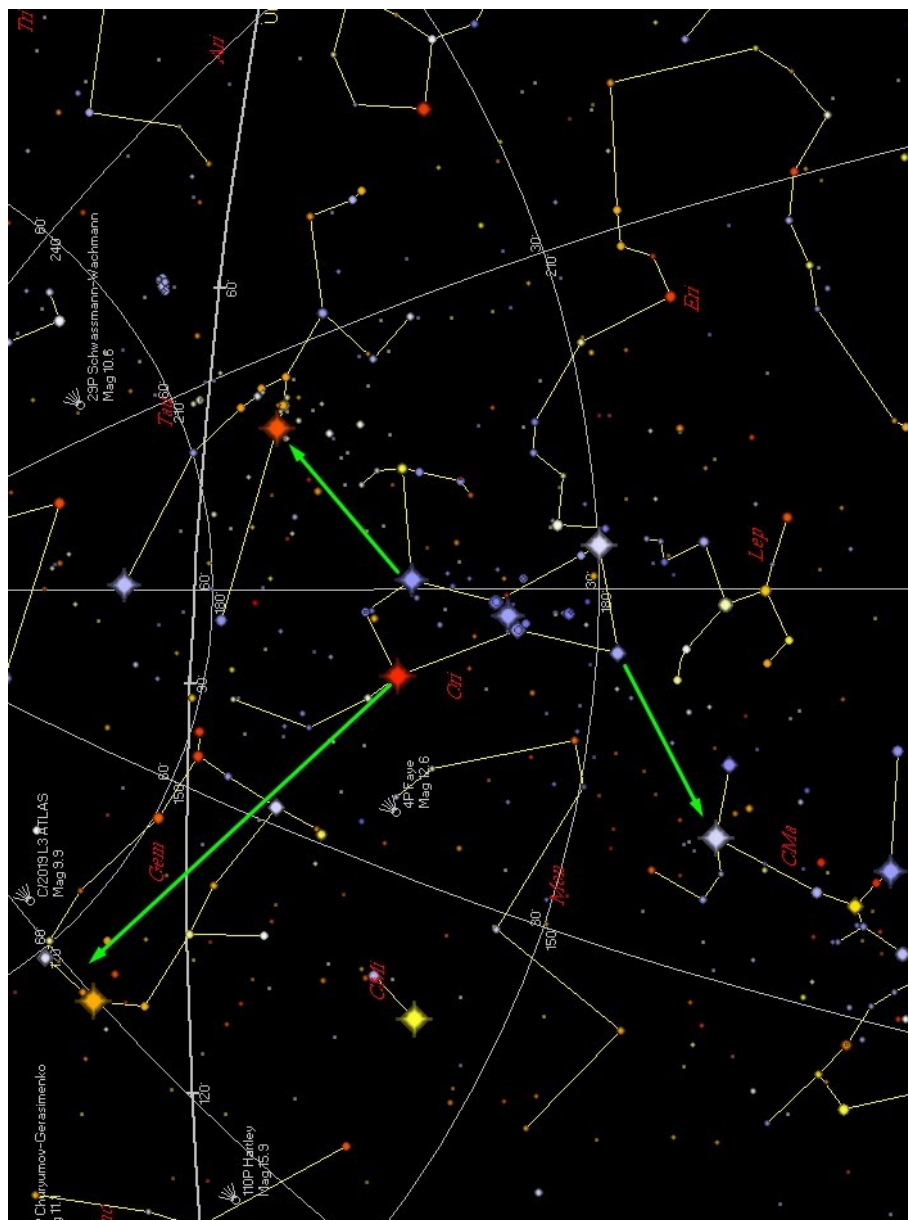
I (Peter Hope Churchwarden) was fortunate to have the opportunity to attend Paulies licensing at St Mary's Tadcaster on the 16th of November. Below is a view of the inside of the Church. I also have some pictures from Paulie last service on All Saints Sunday 28th October at Rivenhall (above and left).

At the service in Tadcaster the Bishop of Selby mentioned the Churchwarden of Paulie old Parish was in attendance in his talk!

Following the service a lady called Judith approached me and told me she knew I would be in attendance!. It turns out that she is a close friend of Brenda Maynard. For those who have lived in Rivenhall for many years, you will remember Geoff and Brenda as very active members of our Parish. They lived in Foxmead and I myself worked with Geoff at Marconi in the late 90's. Geoff and Brenda left Rivenhall and moved back to Yorkshire over 15 years ago then later moved to Wales to be near family. Judith was a childhood friend of Brenda and had heard via the Rivenhall grapevine of my attendance. After the service I warned Paul that there are Rivenhall spies in his midst.!!



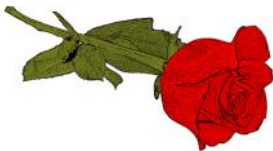
.This Picture of the Night Sky accompanies Jame Abotts Sky at Night Article.



Serving the Local Community for over 125 Years

# G. COLLINS & SONS

Funeral Directors Ltd



30 RAYNE ROAD, BRAINTREE, CM7 2QH

01376 342266

4 THE STREET, WHITE NOTLEY, CM8 1RH

01376 583750

WWW.GCSFD.CO.UK

## Beautiful Rooms For Rent In Witham & Braintree

We have 4 Lovely houses  
2 in Witham—2 in Braintree  
With and Without en-suites  
£90—£130 per Week

(All inclusive of Rates, Light, Heat, and with Broadband)

See our Website:- [www.jbwpartners.co.uk](http://www.jbwpartners.co.uk)

Or Call

John

07850 161629

Mavis

07714 579783

Michelle

07966 323914



**HELP WITH  
FUNERAL ARRANGEMENTS  
*RICHARDS*  
FUNERAL SERVICE**



**01376 513114**

78 Newland Street, Witham, CM8 1AH

From advice on how to register a death to making all the arrangements, we're here 24 hours a day.

Members of the National Association of Funeral Directors  
A British Owned Company [www.dignityfuneral.co.uk](http://www.dignityfuneral.co.uk)

***SpeedyBroadband.co.uk***

***Sick Computers my  
Speciality***

- Home Networking Problems Sorted Out
- Computer Viruses Removed
- Operating System Upgrades
- Upgrade to Windows 10

**FOR YOUR FREE SURVEY AND  
QUOTATION CONTACT**

**Peter Hope**

[peterhope@speedybroadband.co.uk](mailto:peterhope@speedybroadband.co.uk)

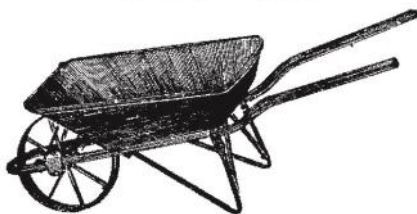
**Tel: 01376 502605**

**Mob: 07904 235101**

**Website**

[www.speedybroadband.co.uk](http://www.speedybroadband.co.uk)

**Ya Garden  
Cares**



**Thorough Attention on  
Bed Maintenance,  
Mowing & Clearance**

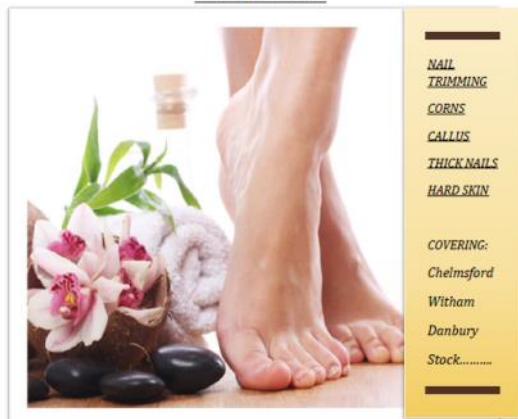
**Telephone  
Barry: 07732337626**

## FOOT HEALTH PRACTITIONER



THE SMAE INSTITUTE

### HOME VISITS



NAIL  
TRIMMING

CORNS

CALLUS

THICK NAILS

HARD SKIN

COVERING:

Chelmsford

Witham

Danbury

Stock.....

**JAMES NEWMAN (MCFHP,MAFHP)**

**TELEPHONE: 01376 519036**

**MOBILE: 07793971351**



**CARING FOR THE PETS OF WITHAM AND  
THE SURROUNDING AREA FOR 25 YEARS**

**SPECIAL O.A.P. SURGERY THURSDAYS**

**CAT ONLY CLINIC WEDNESDAYS**

**Late night surgery Wednesday till 8pm**

**Surgery Opening hours  
Monday to Saturday for appointments**

**Tel: 01376 500038**

**www.brookendvets.co.uk**



**PC Doctor**  
*Operations Limited*

**For all your computer  
requirements including:**

Virus prevention, detection & removal  
Broadband, Networking, Wireless & Firewall set up  
Email & SPAM filtering  
Hardware Repairs & Upgrades  
Software Faults & Crashes  
Backup Solutions & Data Recovery  
Software Installation & Removal  
Hardware & Software Supplied  
Website Management • Computer Training

**Health  
Checks  
£39.99**

**Office: 01621 891064 • Mobile: 07990 565336**

**Email: support@pcdocops.co.uk**

**Website: www.pcdocops.co.uk**

Monthly subscription service available to provide complete "peace of mind" and allow you to spread the cost of your IT requirements.  
Please contact for further information.

## **REYNOLDS CARPENTRY SERVICES**

**For all Carpentry, Joinery  
& Cabinet Making Requirements**

**CSCS Registered**

**30 Years Experience**

**4 Years Apprenticeship**

**City & Guilds and**

**Advanced City & Guilds Qualified**

**Free estimates – No obligation**

**All building work considered**

**Can also make items to order**

**also**

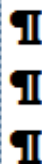
**'curtain poles, tiling, flat packs,  
kitchens, doors, sheds etc, no jobs  
too small'**

**Contact**

**07889 110962**

**Answer phone at other times**

# Jeremy Larke Television services



Telephone: 01376 513645

Mobile: 07947 601619

Email: telerepair@aol.com

All Television Systems Catered  
for Freesat, Freeview, Sky.

- Installations & Repairs To all makes and models
- Full Plasma & LCD Fitting Service
- Wall Mount Brackets Supplied and Fitted
- Aerial & Satellite Dishes Fitted
- Freeview, Freesat & European Channels
- View and Control Your Sky in Other Rooms
- Aerial and Telephone Extension Points Installed



**Don't Delay Call Today**

## Janet C Davies

Dip. F.D. M.B.I.F.D

**BRAINTREE & KELEVEDON'S LADY FUNERAL  
DIRECTOR**

*Offering a full and Comprehensive Funeral Service*

**Telephone 01376 339300**

*For a Personal and Caring 24 hour service*

Local Chapel of Rest at Fern House 72 Coggeshall Road Braintree and  
Victoria House, Trews Gardens, Kelvedon

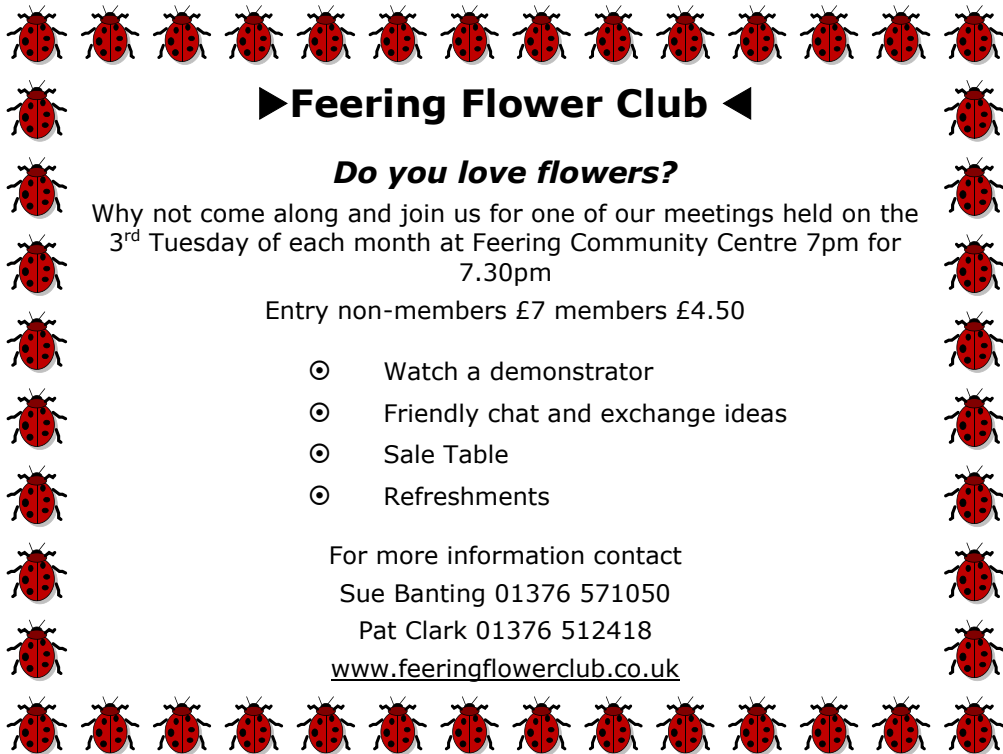
Funerals are arranged and carried out in the Traditional Manner but  
With 'The Gentle Touch'

Pre payment Plans available—Floral Tributes arranges—Woodland Burials  
Bereavement Care—Low Cost Simplicity Funerals - Memorials—Printing  
Catering—DWP Funerals

Part of the Hunnaball Family Group

Members of the National Association of Funeral Directors





## ►Feering Flower Club ◀

### *Do you love flowers?*

Why not come along and join us for one of our meetings held on the 3<sup>rd</sup> Tuesday of each month at Feering Community Centre 7pm for 7.30pm

Entry non-members £7 members £4.50

- ⊙ Watch a demonstrator
- ⊙ Friendly chat and exchange ideas
- ⊙ Sale Table
- ⊙ Refreshments

For more information contact

Sue Banting 01376 571050

Pat Clark 01376 512418

[www.feeringflowerclub.co.uk](http://www.feeringflowerclub.co.uk)

## DANIEL ROBINSON & SONS

Incorporating  
W C BROWN & SONS

**Independent Family Funeral Directors & Monumental Masons**

*A professional, caring, 24 hour service*

Private Chapel of Rest

Fleet of air conditioned limousines

Horse drawn funerals available

Traditional and contemporary funeral services to suit your wishes

Funeral pre-payment plans

Arrangements may be made in the comfort of your own home, if preferred

**Haslers Lane**  
**Great Dunmow**  
Tel: (01371) 874518

**7 Manor Street**  
**Braintree**  
Tel: (01376) 320582

**31 High Street**  
**Halstead**  
Tel: (01787) 475533

[www.drobinson.co.uk](http://www.drobinson.co.uk)

## **Turning the pages of History**

### **Research by Tracy Scott**

We start this month with a fatal accident at Witham Railway Station of one of our local lads Charles Shelley in December 1875. Charles was the son of the innkeeper of the Fox T. Shelley and he was killed instantly by leaving the train while it was still in motion. Witness Thos. Birt a shoemaker of Braintree, was in the same carriage and said he was 'Merry' not drunk. They had been in conversation where the witness was offered a bed if he could not find one in Witham. On arriving at Witham Mr. Shelley said "Here is Witham" and they both got up and opened their doors, but Mr. Birt was stopped by an officer from going out, but missed his companion. Thos. Birt saw him no more until he was laid out on the platform. Another witness said he went under the train and was killed.

Charles father said his son was returning from visiting his sweetheart to whom he was to marry soon. The Jury returned 'Accidental Death' and it was also remarked on the frequency of these fatal falls resulting of people leaving the trains before it has stopped.

Charles Shelley was 23 and said to be a steady young man and once worked under Mr. Taber.

Rivenhall was surrounded by flood water in 1891, with reports of 4-5 foot deep in some areas. A soup kitchen was set up at Durwards Hall with helpers getting food and items to those who needed it.

Mr George Taber entertained the widows and several old couples at his residence at Rivenhall House before Christmas 1892. 22 sat down to tea and all enjoyed a good evening of this seasonable kindness.

Moving on to 1893 when Mr & Mrs Ruggles Brise invited the Servants and Gardeners at Durwards Hall to a concert in the hall. It was reported to be a 'capital evening' with Recitations, Duets, Solos etc., by Misses Brise and Miss Melberg the Governess.

A car overturned near Burghey Brook Farm when passing a lorry in December 1929. The driver Mr. Hillman from Leytonstone sustained bruises and shock. His wife injured her shoulder and ribs.

In 1938 The Trustees of the Wyseman's and Bolla's Charities of Rivenhall distributed among 102 applicants eight tons of coal to the parish just before Christmas.

(More details of the Wyseman family and their charity will be covered in the future).

Also in 1938 the Church Hall had a Christmas Whist Drive with nine tables in play. M.C.'s were Mrs. Campbell and Mrs. Malden. Prize winners were: Mrs. Hammond, Miss Eliss and Miss Hewitt. The consolation was Miss. Lane, Mr. Owers, Mr. Punt, Mr. Reynolds, Mr. W. Whybrew and Mr. Bedford of Silver End.

We will finish the ending of this year with our very own Thomas Tusser in his own words.

### **Christmas Husbandry Fare**

Good husband and huswife, now chiefly be glad,  
things handsome to have, as they ought to be had.

They both do provide, against Christmas do come,  
to welcome their neighbors, good chere to have som(e).

Good bread and good drink, a good fier in the hall,  
brawne, pudding, and souse, and good mustarde withal.

Biefe, mutton, and Porke, and good Pies of the best,  
pig, veale, goose, and capon, and turkey wel drest,  
Chese, apples, and nuttes, and good Caroles to hear,  
as then, in the cuntrey is counted good cheare.

\*\*\*\*\*

### **RIVENHALL GARDENING CLUB**

Club members met on Tuesday 9th November 2021, in Rivenhall village hall. Chairman Tracy Scott welcomed everyone to only the third meeting this year. Before the meeting commenced she congratulated Cyril Philpott on his eight Awards and Trophies at the British Fuchsia Society Show at Ipswich in July. They included the winner of the most points in all classes and winner of the most first prizes. Congratulations Cyril! Mrs. Scott mentioned that the Committee has re-instated the monthly Bring and Buy sale table, all proceeds to Club funds, The Club will also be represented at the village War Memorial on Sunday

14th November, when a wreath of poppies will be laid on behalf of the Gardening Club.

Our speaker for the evening was Jacky Froggatt, a senior Magistrate, appointed by the Queen. The first Magistrate appointment was in 1198 and in 1360 came the new title of Justice of the Peace. The first female Magistrate was Ada Summers appointed in 1920, most probably because she was the Lady Mayoress. Jacky has now served for 28yrs as a Magistrate/ Justice of the Peace and is now a Presiding Justice covering many areas but with a particular interest in the Family Court - 'closed' in order to protect the children involved and here we heard some sad stories. 95% of cases start in the Magistrates Court. They can deal with minor infringements, issue fines and can give sentences of up to a year. Anything of a more serious nature will go to the Crown Court. Jacky went through the various procedures of the Court and explained the way they are set up and on a lighter note gave some amusing asides involving the people who came up before her. You do not have to have special qualifications to serve, you can in fact nominate yourself. Training is given. The important thing is to have a balanced view of things and the ability to think things through with absolutely no bias. It was a very interesting and informative evening and our thanks to Jacky.

## COMPETITION RESULTS

### Horticultural

1<sup>st</sup> Maurice Bacon    2<sup>nd</sup> Cyril Philpott    3<sup>rd</sup> Jenny Claydon

### Flower of the Month

1<sup>st</sup> Cyril Philpott    2<sup>nd</sup> Maurice Bacon    3<sup>rd</sup> Shirley Bacon

### Photographic

1<sup>st</sup> Jenny Claydon    (one entry)

The Club's next meeting will be the Christmas Social Evening on Tuesday 14th December, 7.30pm in Rivenhall village hall. There will be a bring and share buffet, a Tombola and a Quiz. Competitions will be Horticultural -- any vegetable. Flower of the Month. Photographic ( your garden, flowers, or similar). New members and visitors are

always welcome. We have some interesting speakers who speak on a variety of subjects and in addition to the monthly meetings we hold three shows a year.

The annual adult subscription is just £5 and the junior subscription is £1. Normal evening entrance is £2 including refreshment. We look forward to seeing you. For further information contact the Club Secretary on 01376 512781.

\*\*\*\*\*

## **Sky Notes**

### **December 2021**

The Winter Solstice takes place at sunset on December 21st. Whilst this is the day with the shortest hours of daylight of the year, the shortest afternoon is about a week earlier and the shortest morning a week later. So by the first week of January daylight is expanding both AM and PM.

The New Moon of 4th December brings a total eclipse of the Sun – but with the best views restricted to Antarctica !

During early December from the 6th to the 9th, three planets can be seen in the early evening in the South with the young Moon close to each in turn – from right to left Venus, Saturn and then Jupiter. Venus is easily the brightest of the three and this month is at its brightest for the whole year, visible soon after sunset. By the end of December all three planets are becoming more difficult to spot, moving into evening twilight.

Full Moon is on the 19th and taking place near the Winter Solstice is exceptionally high in the sky – 63 degrees when due South at midnight

The Geminid meteor shower peaks on the night of the 13th/14th December. The Moon is not helpful this year as it is waxing as the shower reaches its peak and so to see the meteors in a darker sky will require waiting until after midnight. That said, the Geminids are currently the most active of all the annual showers and so some may be seen earlier in the night even with moonlight.

Comet Leonard will be visible in the pre-dawn Eastern sky in early December and it is possible that it may become visible

to the unaided eye – updates will be posted to the Rivenhall Observatory facebook page if it does become bright.

The Moon will be out of the evening sky by the last week of December and clear nights during the Christmas week will offer good views of the bright winter constellations. Orion is due South at 11pm and can be used as a finder to nearby bright stars (see chart).

To the upper right of Orion is Aldebaran, the lead star in the constellation of Taurus. Aldebaran is noticeably red or orange in colour and is about 65 light years from Earth. To the upper left of Orion the twin stars of Gemini can be found. The higher of the two is Castor which is white and 52 light years away, the lower is Pollux which is orange and about 34 light year away. Then to the lower left of Orion is the brightest star in the night sky. This is Sirius, which is white and 9 light years from the Earth. Because Sirius is so bright and also quite low down as seen from the UK, on cold winter nights it can appear to flash quickly through different colours, a process known as scintillation which is caused by seeing the light from the star through layers of our atmosphere.

### *Sky Watcher*

\*\*\*\*\*

## **A Ramble in The Yorkshire Wolds**

### **Huggate to Fridaythorpe (by Peter Hope)**

**Distance:** 8.2 miles (Including detour to Fridaythorpe)

**Ascent:** 700 feet **Grid Reference:** SE882551

The writer Winifred Holtby, born in Rudston, described the Yorkshire Wolds as 'fold upon fold of encircling hills, piled rich and golden'. Holtby perfectly captures the beauty of this tranquil and gentle countryside with its rolling hills, chalk landscape and rich wildlife.

While I was in Yorkshire the weather was perfect to enjoy one of the very picturesque walks in this region. I chose the circular walk from the small village of Huggate to the village of Fridaythorpe. This walk can be found in the AA book of walks The map of the walk can also be found on the web at <http://www.gps-routes.co.uk/routes/home.nsf/osmapdisp?openform&route=huggate-walking-route>

This circular walk from the East Riding village of Huggate visits the neighbouring village of Fridaythorpe using a section of the

'[Yorkshire Wolds Way](#)' and other public footpaths.

Huggate is notable as the highest village on the Yorkshire Wolds at around 558 feet (170 metres) above sea level. It's a pretty area with some lovely rolling countryside and quaint little villages to admire. From the high points on the route there are some splendid, far reaching views to enjoy.

Start the walk from the village where you can pick up the Wolds Way and follow the waymarked trail north. It will take you through the attractive Holm Dale to Fridaythorpe. The village has a pretty duck pond a Grade I listed Church which is now recorded in the National Heritage List for England, maintained by Historic England.

### **Cafes along the way**

Head to the Wolds Inn in Huggate for some post walk refreshments. They do very good food and also have a nice beer garden for warmer days. You can find the inn on Driffield Rd with a postcode of YO42 1YH for your sat navs. If you need to stay over they also provide good quality accommodation. There is also a café at Fridaythorpe where one can enjoy a light refreshment. This café is very popular with bikers.



### **Interesting churches along the way**

**The Church of St Mary, Huggate** has a W tower, aisled nave with porch, and chancel with vestry. Restored 1864. The chancel arch and the nave arcades are twelfth-century work; the two round-headed but over-restored windows in the E wall of the nave may well originally have been of the same period too. A highlight of the church is the south nave arcade with its finely-sculptured human and animal heads on the capitals.



### **St Marys church Fridaythorpe**

This is a very attractive small, squat Norman building. The nave

and chancel were built in the early 12th century and the tower was added later. In the 13th century a north aisle was built and clerestory windows added to the nave. By the 17th century the church was in poor condition and the north aisle was demolished. Further repairs were needed in the 19th century. In 1902-3, Sir Tatton Syles II of



Sledmere House paid for a major restoration. The north aisle and south porch were rebuilt. The north aisle had to be completely rebuilt again in 1999 due to structural failures and the south porch was rebuilt in 2010. A very interesting feature of the tower is the clock which was added as part of the restorations in 1903 (see picture). The small window below is from the Norman period. For more information and pictures visit [http://wasleys.org.uk/eleanor/churches/england/yorkshire/east\\_riding/east\\_one/fridaythorpe/index.html](http://wasleys.org.uk/eleanor/churches/england/yorkshire/east_riding/east_one/fridaythorpe/index.html)



For me the highlight of the walk was the visit to the Seaways Café where I enjoyed a delicious traditional Yorkshire meat pie (pasty). I spoke to one of the bikers, as most of them were of a similar age to me and he advised me they are not "Hells Angels" but they did have some impressive bikes. MY favourite part of the walk was the contoured chalk valleys which are related to glaciation in the ice age and the stunning views from the top of the Wolds Way.

## **The Duck Pond at Huggate**





# **BURNS SUPPER**

**An Evening of Scottish Fare and  
Entertainment at**

**SILVER END VILLAGE HALL**

**7.00pm for 7.15pm on Saturday 5  
February 2022**

**Tickets £25.00**

***Available from Ann Kerr 01376  
515437***



**Dance to live music with  
The Music Makers  
and Caller Sue Last**

**Piping interlude**

***Please bring your own drinks and glasses***

***Last dance 11.30, Carriages 1145pm***

Event subject to Covid Regulations in force at the time.  
For your safety

When purchasing tickets please certify all attendees are  
Covid vaccinated

Some windows will remain open to ensure adequate  
ventilation (you may wish to bring extra woollies)

In the event of cancellation by either party, there is a  
non refundable £5.00 deposit

## Organisations in Rivenhall

Clerk to Parish Council	Keith Taylor	516975
Email parishclerk@rivenhallparishcouncil.net	meets every first Tuesday	
End to End Nature Care	Simon Taylor	01621 810141
Gardening Club	Carole McCarthy	512781
Meets on 2nd Tuesday at 7.30pm in Village Hall		
Carpet Bowls	Mick Marshall	512836
Meets every Thursday at 7.30pm in Village Hall		
Playing Fields Association	Mick Marshall	01376 512836
Spread Your Wings Dance Acam	Laura Pearson	01376 741317

## Facilities

Hire of Village Hall	email rivenhallvillagehall@gmail.com	
Hire of Henry Dixon Hall	Tracy Scott	571551
Oak Store Rivenhall "Open All Hour" Tel AJ		01376 538838

## Organisations in Silver End

Clerk to Parish Council	Mrs B. M. Temple	618464
Email parishclerk@silverendparishcouncil.gov.uk		
Bowls Club	Paul Mann	07551 006906
Children's Centre	Faye Savage	587960
Neighbourhood Police	Braintree Policing Dial 101	
Congregational Church	Sharon Gray	583913
Friendship Club	Maureen Green	585275
Silver End Gad Abouts	Denise Sullens Smith	07952 992782
Gardening Club	Liz Woor	585586
Guiding Group	Carol Hutchings	07857 663959
Neighbourhood Watch	Judy Hill	07896 975839
Scouting Group	Elaine Hall on +44	7885 489788
St Mary's Church (R.C.)	Vivian Phillips	583598
Tennis Club	Jason Cairns	584581
Workers Educational Assoc.	Brian Gillion	583706
Luncheon Club	Helen Thomson	583255
Doctors Surgery		583387
Silver End Heritage Society	Jackie Nesbitt	07707 084608
Silver End United Football Club	Mark Edgell	584639 Web
Site www.silverendunitedfc.co.uk		
Women's Institute	Brenda Warnes	07931 548193
Community Warden	Jackie Windard	07785 515526
Post Office in Co-op - please note that it closes at Lunchtime 1-2pm		
Closes 1 pm Wednesday and 12.30 pm Saturday		
Library: Tues & Thurs - 2pm to 6pm Saturday 9am to 1pm		

HUNNABALL

Family Funeral Services



Here **whenever** you need us

Funerals | Memorials | Pre-paid Funeral Plans

**Hunnaball of Witham**

1 Coach House Way, Newland Street, Witham CM8 1YJ

**01376 511592**

[www.hunnaball.co.uk](http://www.hunnaball.co.uk)

**JANET C DAVIES**

Lady Funeral Directors



**Our Ladies  
in Hats**

*"funerals with  
a gentle touch"*

Funerals | Memorials  
Pre-paid Funeral Plans

**Janet C Davies of Kelvedon**

233 High Street, Kelvedon CO5 9JD

**01376 573691**

[www.hunnaball.co.uk](http://www.hunnaball.co.uk)

# DRH LANDSCAPES

Est. 1987

Quality Comes 1<sup>st</sup>

**Garden Landscape and Design – Hard Landscaping – Soft Landscaping  
Grounds Maintenance for Private and Commercial Premises**

- Are you planning to redesign and landscape your garden?
- Does your garden just need a little TLC or a complete makeover?
- Are you looking for assistance with regular garden maintenance or perhaps a one-off visit to get things back in order?
- Is your lawn looking tired? Would you like a new replacement lawn or artificial lawn instead?

We are a family run business with over 30 years of experience working in the ever changing world of landscape management, business regulations and horticulture, with full public and employer liability insurance, as well as being a fully registered waste carrier with the Environmental Agency.



OFFICE: 01376 514142

We welcome...



EMAIL: [info@drhlandscapes.com](mailto:info@drhlandscapes.com)

[www.drhlandscapes.com](http://www.drhlandscapes.com)

Harcog Centre, 77-83 Maldon Road, Witham, Essex CM8 1HP

